

A dramatic black and white photograph of a construction site. In the foreground, a muscular, dirt-covered hand emerges from a pile of dark soil, firmly gripping a large, dark steel I-beam. The hand is positioned centrally, with the beam angled upwards. In the background, two large tower cranes stand against a sky filled with heavy, textured clouds. The ground is a muddy construction site with some vehicles and structures visible in the distance. The overall mood is one of strength and industrial power.

Where Steel Meets Majesty

section 1

About our company

- MAJESTY was established in 2017 and since then MAJESTY has been working in Steel and Plate work Construction.
- MAJESTY has a very unique experience in Steel and Plate work Construction field as its owners was the previous Engineers of Orascom, Hassan Allam, Mantrac, Redcon and DALAL Steel Industries Company and has been working in this field since then.
- Within the Steel Structure field MAJESTY developed its own methods that enabled it to enhance its performance and expand its clients.
- Working for many years in Steel Structure enables MAJESTY to be more specialist in specific branches in Steel and Plate work Construction.





section 2

About our services



- project management
- Estamination
- Quality assurance & control
- Manufacturing
- Construction
- Material planning

Our factory

We have two factories to rely on them in manufacturing of the major projects that we worked on. one of the workshops located at 10th of Ramadan industrial zone and the other at Qalyub industrial zone.



WE WORKED WITH



Urban Communities
Authority



Engineering Authority of
the Armed Forces



Cosmos Consultants



Dalal Steel Industries



Savola Foods



ECG - Engineering
Consultants Group



Hassan Allam Construction



Redcon Construction



AlShaafar General
Contracting



EMAAR Misr

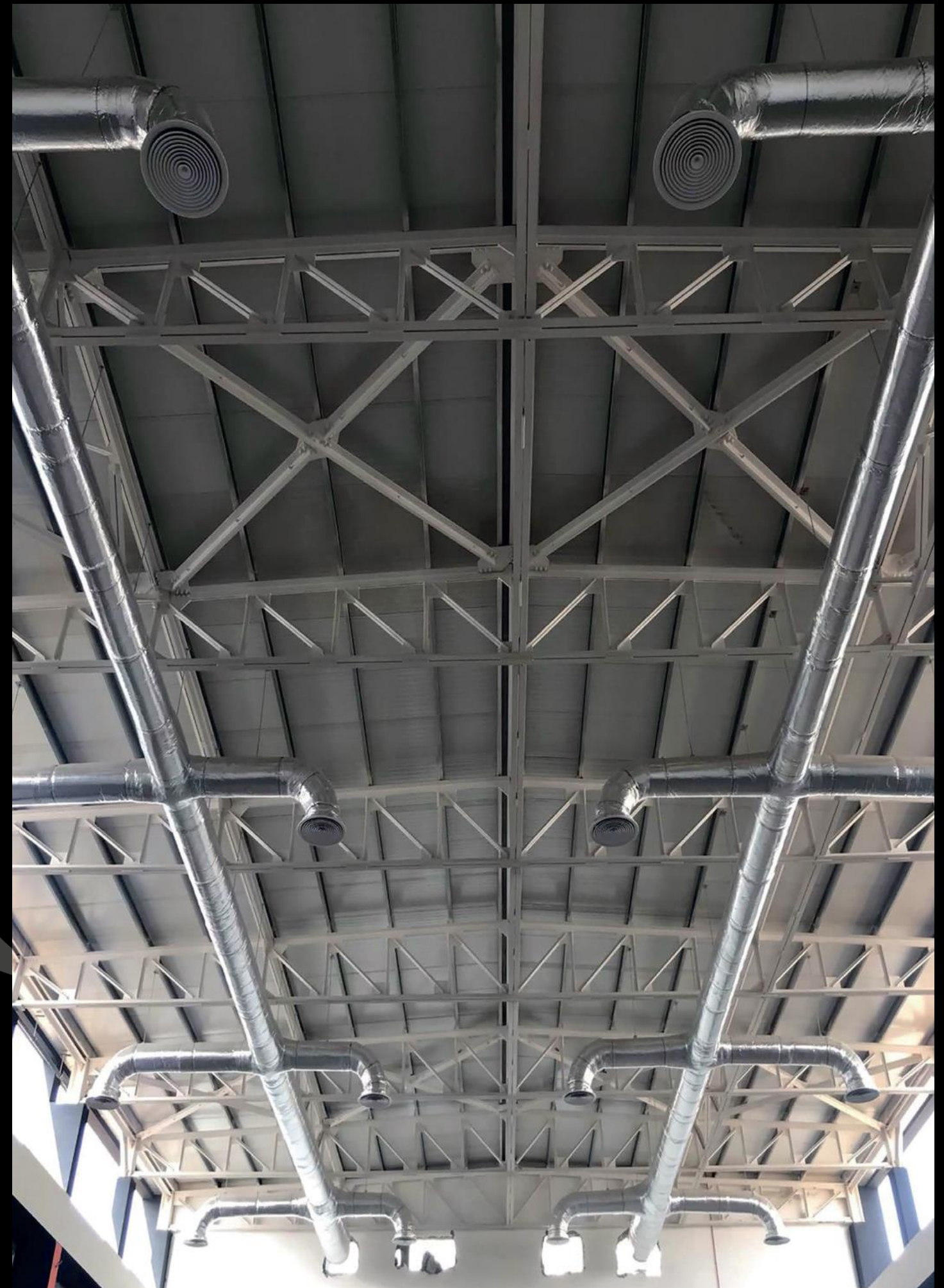


Orascom Construction

Our Recent Projects



- Mivida English School Playground.
- Area: 1440 m².
- Tonnage: 42 ton.
- Scope of work design, shop drawing, fabrication, erection and sandwich panels installation according to the project specifications.
- Client: EMAAR Misr.
- Consultant: EGEC.

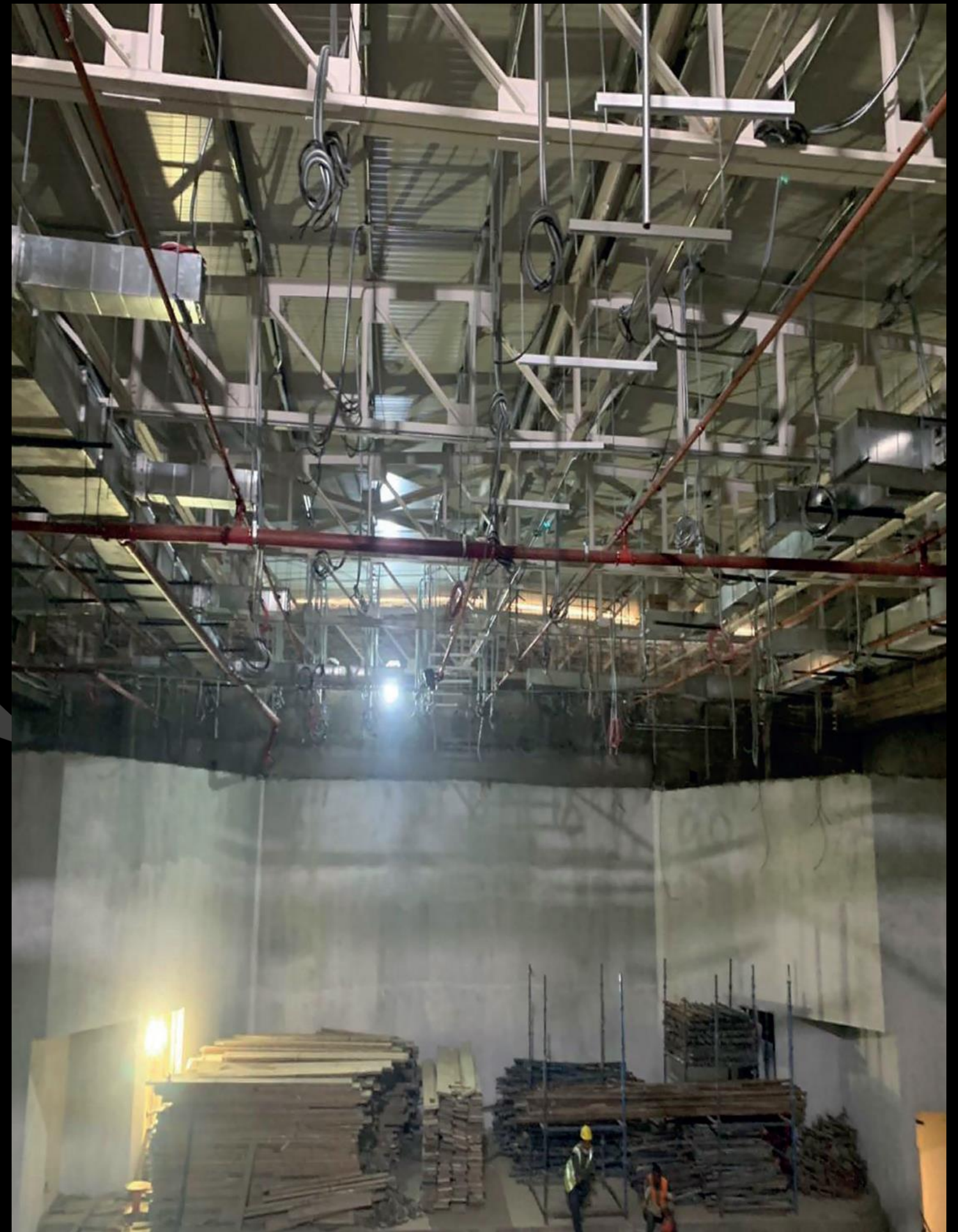


Our Recent Projects



Mivida English School Theatre.

- Area: 1080 m²
- Tonnage: 34 ton.
- Scope of work: design, shop drawing, fabrication, erection and sandwich panels installation according to the project specifications.
- Client: EMAAR Misr.
- Consultant: EGEC.



Our Recent Projects



AlBahy for poultry feed-Ismailia desert RD

- Area: 2100m²
- Tonnage: 61ton.
- Scope of work: design, shop drawing, fabrication and erection according to the project specifications.
- Client: AlBahy.
- Consultant: DR.Nabil Foad.



Our Recent Projects



AlJazi-Al-rehab-new cairo

- Area of one building: 80m²
- Number of buildings: 16
- Total Tonnage: 128 ton.
- Scope of work: design, shop drawing, fabrication and erection according to project specifications.
- Client: AlJazi.



Crisis Building- Gharbia Government



Installation Of Steel Structural System And Decking Slab Of Crisis Building at Gharbia Government.

- Area: 584 m²
- Tonage: 36 ton
- Scope Of Work: Shop Drawings, Fabrication and Erection of Steel Structure and Steel Decking Slab According to Project Specification.
- Client: Gharbia Government
- Consultant: Engineering Authority of Gharbia Government



Senyorita Foods – Americana Group



Structural System Of A New Production Lines

- Tonage: 14 ton
- Scope Of Work: Design According To AISC (american institute of steel construction), Shop Drawings, Fabrication And Erection of Steel Structural System.
- Client: Senyorita Foods
- Consultant: Prof.Dr: Hany Al-Khareby



Kidney Hospital –Tanta University



Installation of Roof CatWalk, Connected Bridge And Transistors Bases

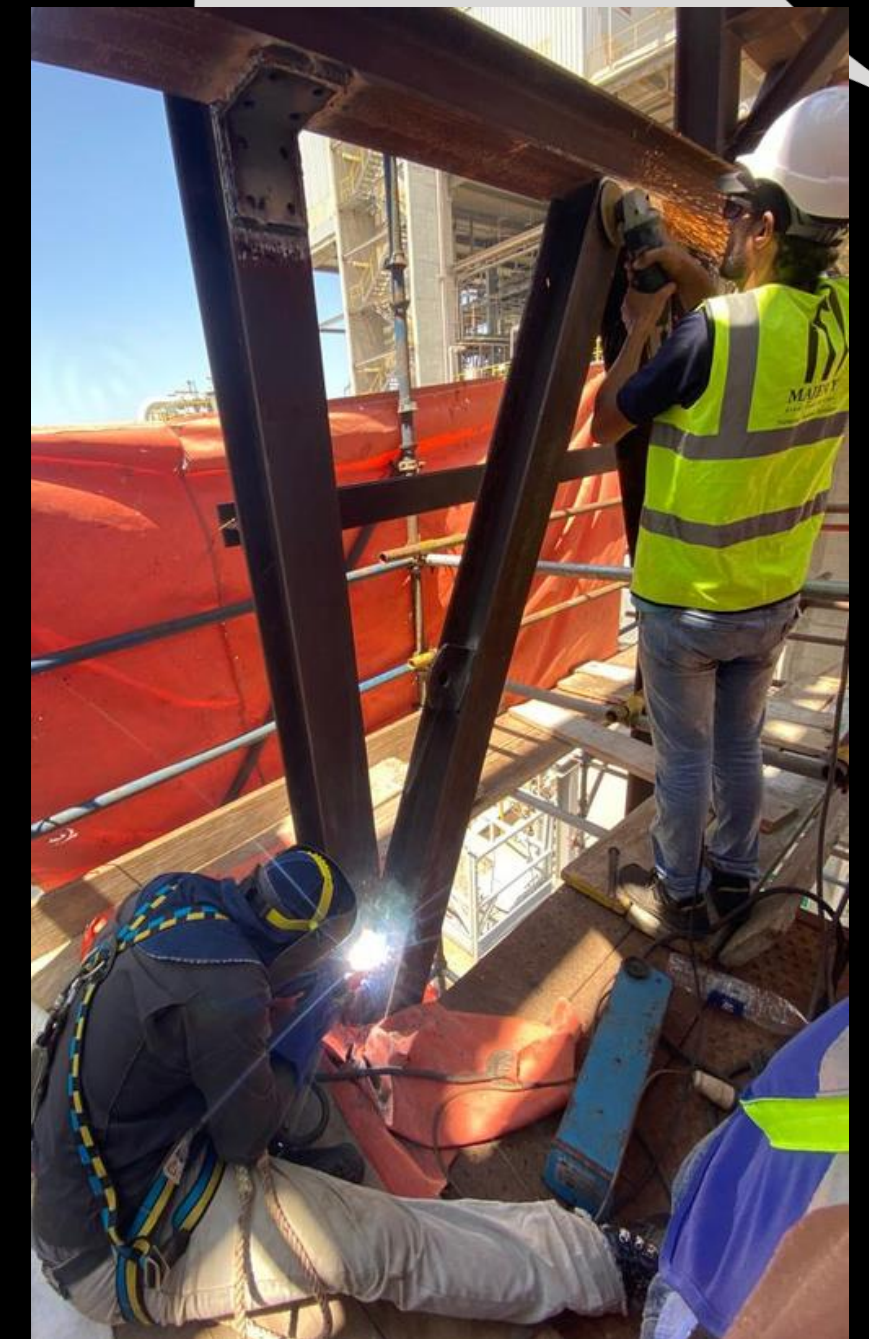
- Tonage: 16 ton
- Scope Of Work: Shop Drawings, Fabrication And Erection According To Project Specification
- Client: Tanta University
- Contractor: Military Production Company For Projects, Engineering And Consultancy
- Executive Contractor: Emaar Al-delta Group
- Consultant: Engineering Research and Consulting Center of (Faculty Of Engineering-Tanta University)



EPP–Egyptian company for propylene and polypropylene

Strengthening of RC Columns of pipe rack 2303

- Tonage: Lump Sum
- Scope Of Work: Design According To AISC (american institute of steel construction), Shop Drawings, Fabrication, Site Welding And Erection of Steel Structural System.
- Client: EPP
- Consultant: Prof.Dr: Hany Al-Khareby



Solar Panels Chassis – Alsalam University

Construction of Solar Panels Chassis

- Scope Of Work: Design According To AISC (american institute of steel construction), Shop Drawings, Fabrication, Hot-Dip galvanization And Erection of Steel Structural System.
- Client: Alsalam
- Consultant: Alsalam civil engineering department



Chillers Platform-new Banha University

Construction of Chillers platform Chassis

- Scope Of Work: Design According To ECP, Shop Drawings, Fabrication, Epoxy Painting And Erection of Steel Structural System.
- Client: Egyptian armed forces engineering authority
- Consultant: CES consulting, engineering Centre



Final product stores cladding

EPP-Egyptian company for propylene and polypropylene

- Scope Of Work: Sheeting Shop Drawings, Supply And Erection of Steel Sheeting.
- Client: EPP
- Consultant: EPP engineering department



Green Organic Foods

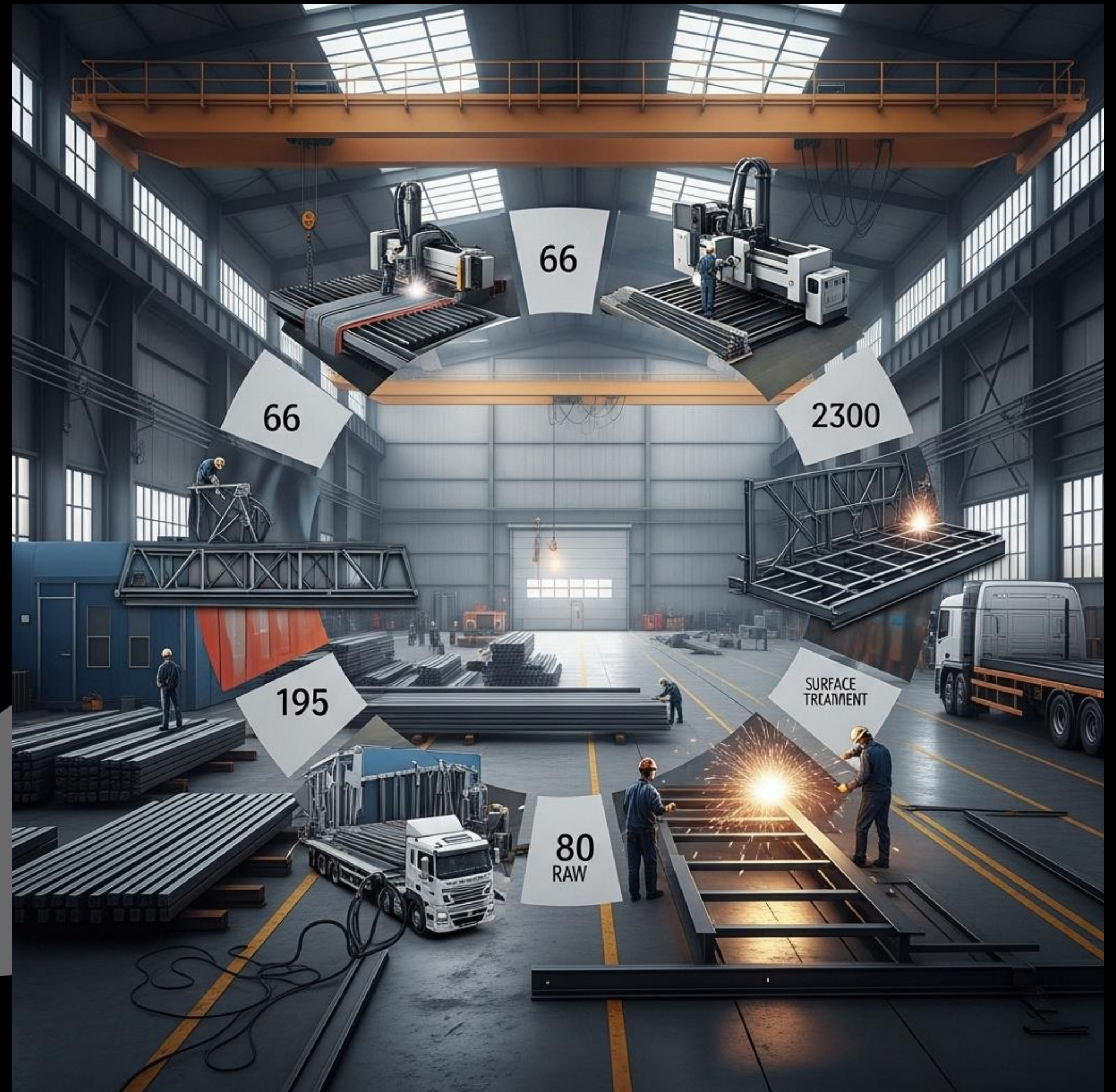
Construction of green organic factory

- Scope Of Work: Design According To AISC (american institute of steel construction), Shop Drawings, Fabrication, Sand blasting , Epoxy paintings And Erection of Steel Structural System.
- Client: Green organic - Prof.Dr.Eng. Emad Etman
- Consultant: Green organic engineering department



Roles & Responsibility

- Project Manager
- QC&QA Manager
- Production Manager
- Fabrication Inspector
- Construction Manager
- Site Engineers



Roles & Responsibility

Project Manager

- Overall execution and administration of the project as per contract requirements, specifications and the PQP.
- Liaise with the Head (Quality & HSE) for preparation and updating of PQP.
- Directly control the Site Engineers and Supervisors.
- He is responsible to ensure that all the correct procedures are followed and all necessary permits for the works are obtained in advance.

QA/QC Manager

- Responsible for the monitoring and implementing of quality related matters and ensure the works are being executed with the approved Project Quality Plan and requirements of the Contract Documents approved method statement and ITPs.

Roles & Responsibility

Production Manager

- Responsible for production management and execution of quality procedures that meets project specifications and project requirements
- Establishment of production organization.

Fabrication Inspector

- Shall be responsible for inspection on production of shell plates, beams, angles, pipes, fittings and spools to ensure the procedures are being followed in order to ensure that quality standards being achieved as per project procedures requirements and specifications
- Shall be responsible for maintaining of NDT records and Project Documentation.

Roles & Responsibility

Construction Manager

- Assess manpower, equipment or other resources required to ensure timely completion of the project.
- Monitor availability of all materials as per schedule.
- Inform the Project Leader for any non availability of materials to take proper action.
- Carry out receiving inspection in coordination with the QA/QC Engineer.
- Ensure that the drawings and documents are up to date and the latest drawing is available and is being utilized in the project site works.
- Fill-up the check-sheet and submit the necessary IR to the QA/QC function when the work is ready for inspection.

Health & Safety

- Safety is at the core of Majesty's operation.
- Majesty's advantage relies on its highly specialized team, the company therefore attaches the utmost importance to the health and safety of every individual.





THANK YOU